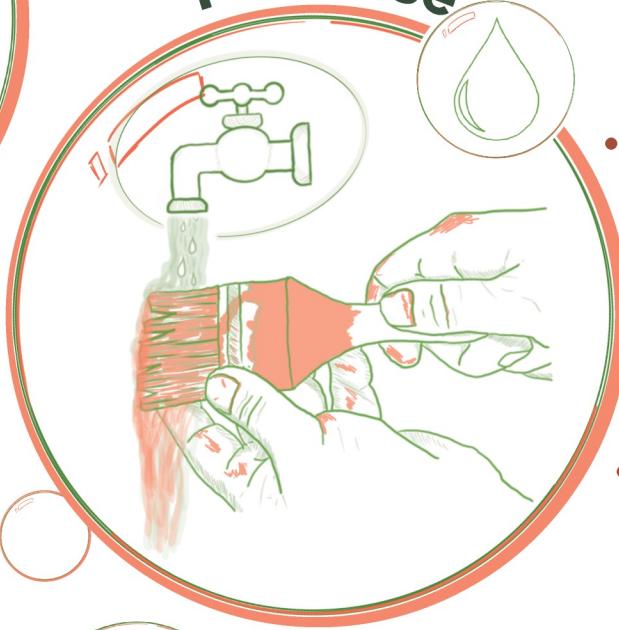


CLEAN YOUR PAINTBRUSH

What You'll Need

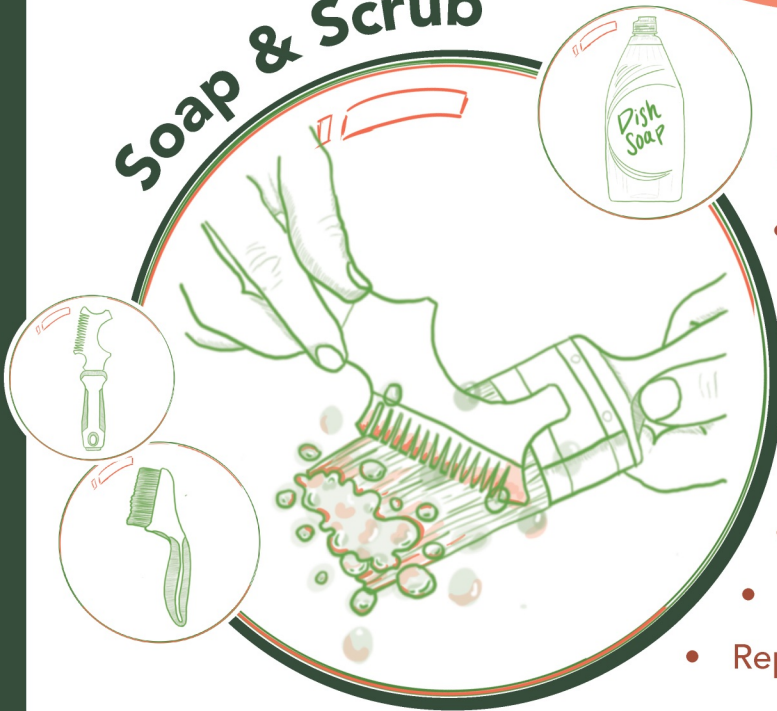
1. Water
2. Dish Soap
3. Murphy's Oil Soap
4. Steel Comb
5. Brush Stripper

Pre-rinse



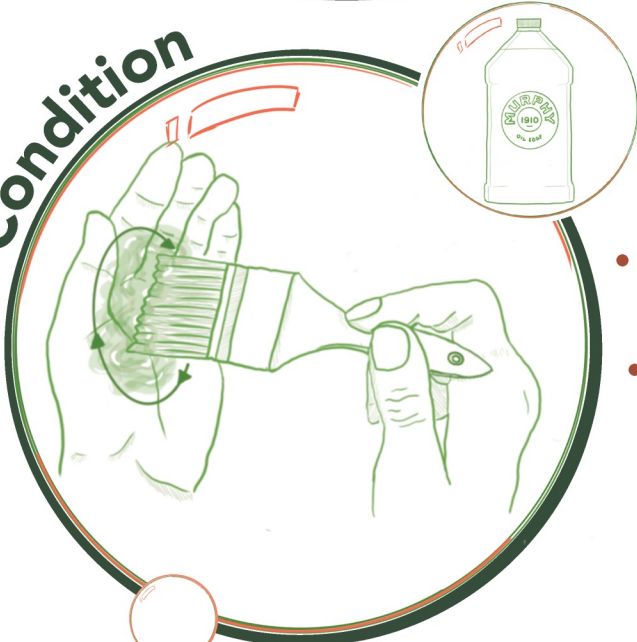
- Run the bristles under warm water.
- The bristles will bend and arch slightly.
- Gently massage the bristles against your palm in a circular motion.
- Continue until most of the paint is washed out of the bristles.

Soap & Scrub



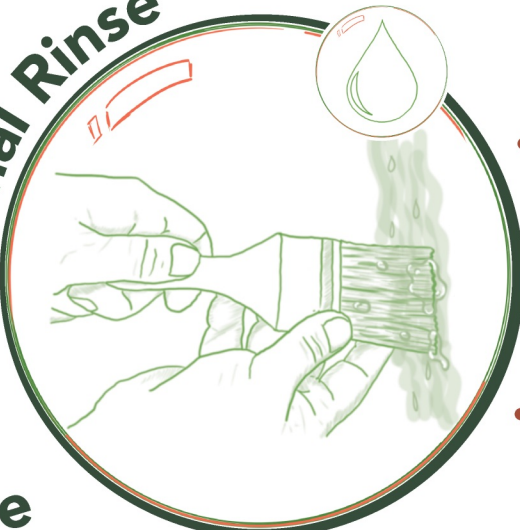
- Apply a dime-sized amount of dish soap to your palm.
- Massage and lather the soap into the bristles.
- Comb through the bristles with a metal comb to remove dried paint or debris.
- Place the brush against a firm surface like the bottom or edge of the sink.
- Use the wire brush to remove any dried paint from the bristles or ferrule.
- Check and brush all four sides of the paintbrush.
- Rinse the soap off under running water.
- Repeat if needed until all the paint is removed.

Condition



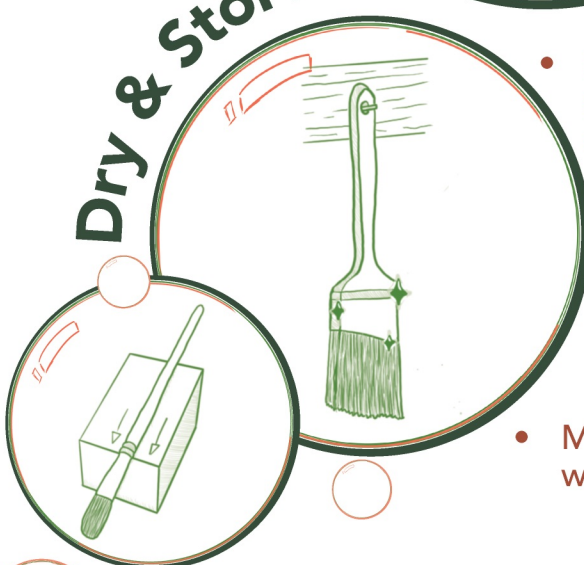
- Apply a dime-seized amount of Murphy's Oil Soap to your palm.
- Massage the soap into the bristles using your palm until the Murphy's Oil is thoroughly distributed throughout the bristles.

Final Rinse



- Hold the brush under the running faucet.
- Gently massage the bristles against your palm.
- Continue massaging until all the soap and paint is dislodged.
- Keep going until the water runs clear.

Dry & Store



- Gently squeeze the water from the paintbrush, starting at the ferrule and working toward the end of the bristles.
- Use a whipping motion to remove any remaining water.
- Smooth out the bristles with your fingers.
- Hang the paintbrush to dry or place it at an angle on an elevated surface.
- Make sure the ferrule is higher than the bristles so the water flows away from it.